

# Rocwood Trolley Jack



**RWTJ3.0**

**OWNER'S MANUAL**

**EN**

READ THIS MANUAL CAREFULLY BEFORE USE – FAILURE TO DO SO MAY RESULT IN INJURY,  
PROPERTY DAMAGE AND MAY VOID WARRANTY.

KEEP THIS MANUAL FOR FUTURE REFERENCE. Products covered by this manual may vary in  
appearance, assembly, inclusions, specifications, descriptions, and packaging.



# Introduction

This manual has been produced by Rocwood and should be kept with the product and referenced for operation, maintenance and troubleshooting.

This manual contains an overall description of the product, together with all the necessary information for using the product correctly and safely. It is highly recommended that this manual is read prior to any operation or maintenance of this product. The safety precautions and warnings are to ensure your safety and protect you from harm or damage to the product.

All photographs and drawings in this manual are supplied by Rocwood to help you with the operation and maintenance of the product. The information contained in this manual was accurate at the time of production, however Rocwood may make modifications to the product without notification.

When operating and maintaining this product as instructed in this manual, your item will give you many years of reliable service.

**Rocwood Limited**

*Rocwood House*

*Lightwood Green Industrial Estate*

*Overton*

*Wrexham*

*LL13 0HU*



# Specification

Brand	Rocwood
SKU	RWTJ3.0
Lift Type	Pump Handle
Lift Capacity	3 Tonnes
Material	Heavy Duty Steel
Height Range	75 mm – 505 mm
Drive	Hydraulic
Release	Valve
Wheels	2.5"
Warranty	A 12 Month Domestic User Warranty, Business Or Continuous Use Will Invalidate this Warranty.



# Contents

- 2) Introduction
- 3) Specification
- 4) Contents
- 5) For Safe Operation
- 6) Safety
- 7) Features
- 8-9) Parts Assembly
- 10) Pre-Operation Checklist
- 11) Operation
- 12) Maintenance
- 13) Warranty



# For Safe Operation



**Wear appropriate clothing.**



**Moving Parts.**



**3 Tonne Limit.**

The manufacturer cannot anticipate every possible hazardous circumstance that the user may encounter. Therefore, the warnings in this manual, on tags, and on affixed decals are not all-inclusive. To avoid accidents, the user must understand and follow all manual instructions and use common sense.



# Safety

Please read carefully where there are "safety instructions" and "warnings". If you do not follow the warning instructions and operation methods, you may be in danger or cause property damage.

## Safety Instructions

1. Overload is strictly prohibited.
2. Please use on flat, solid level ground, to effectively prevent sliding.
3. Do not move or push the jacked object while it is lifted.
4. This product can only be used for lifting, do not use it for other purposes.
5. After lifting the heavy object, support the object with axle stands. It is forbidden to use the jack as a support tool.
6. It is strictly prohibited to tamper with the safety valve.
7. It is forbidden to replace the existing parts with other parts.
8. The jack must be carefully aligned with the vehicle's jacking points at the beginning of the jacking operation.
9. When jacking do not turn the handle as the oil return valve will operate & the jack will drop.
10. To unload and remove the jack slowly turn the handle counterclockwise to make the vehicle descend slowly.
11. Do not disassemble or refit the jack.
12. Do not adjust the safety valve.
13. Wear appropriate protective equipment when operating the jack.

## Warnings

1. When the lifted object is supported only by this equipment, do not work above or below it or around it.
2. It can only be jacked on the surface specified by the vehicle manufacturer.
3. Before lifting the vehicle, please apply the brakes and chock the wheels.
4. Do not lift unsupported vehicles (such as travel trailers, campers, etc).

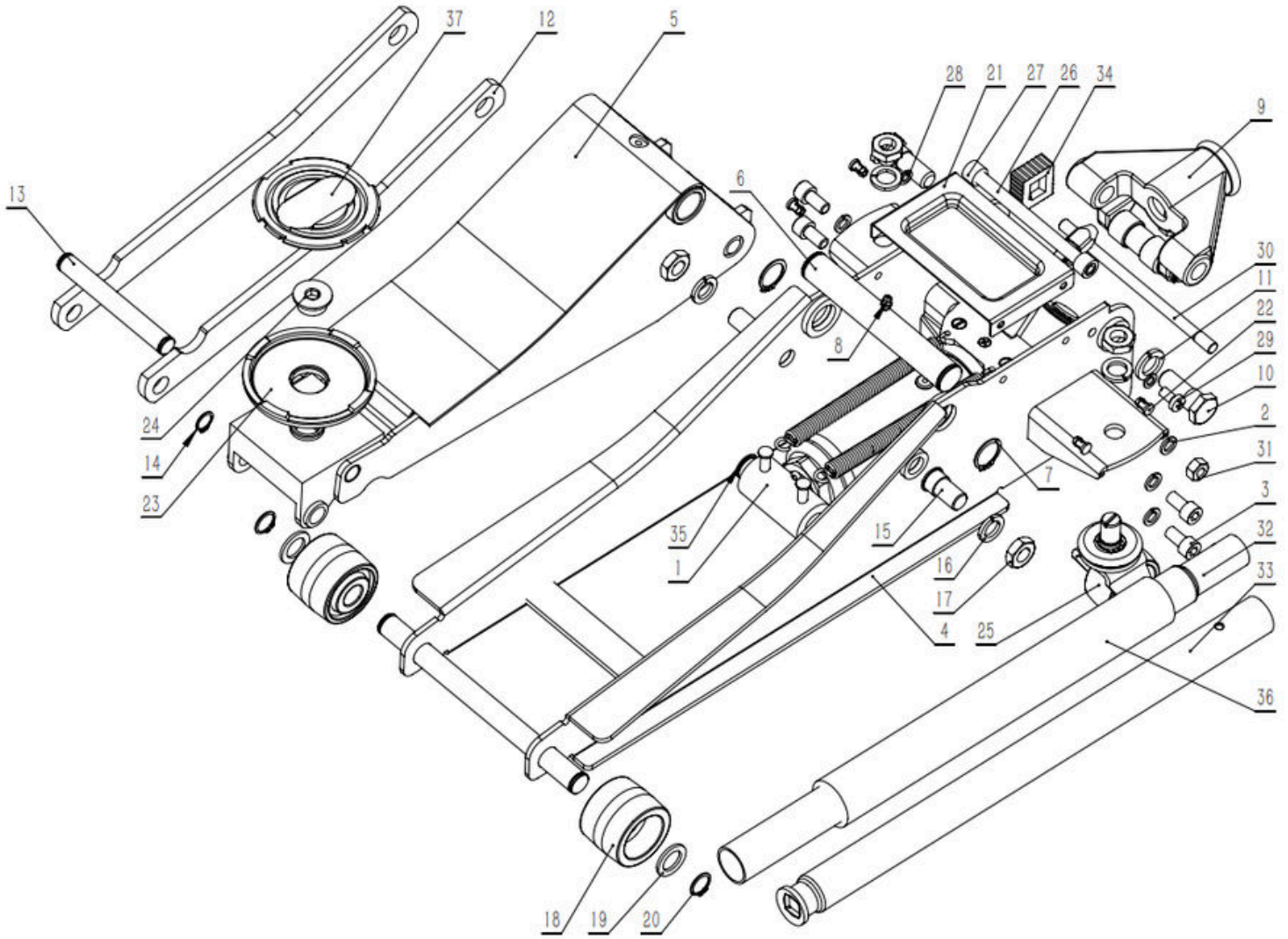


# Features





# Parts Assembly





# Parts Assembly

	Name	Quantity
1	Oil pump assembly	1
2	Light spring washers M10	6
3	Hexagon socket. Cylindrical head screws M10×20	4
4	Side plate weldment	1
5	Lifting arm weldments	1
6	Middle axis	1
7	Circlips for shafts M25	2
8	Straight-through pressure oil cup	1
9	Handle socket components	1
10	Socket bolt	2
11	Light spring washers M18	2
12	Tie rod	2
13	Tie rod connecting shaft	1
14	Circlips for shafts M16	2
15	Tie rod-pin	2
16	Light spring washers M16	4
17	Hexagonal thin nut M16	4
18	Forward wheel (Nylon)	2
19	Flat pad M19	2
20	Circlips for shafts M19	2
21	Cover	1
22	Cover fixing pin	4
23	Trustplate	1
24	Trustdisc shaft	1
25	Back wheel assembly	2
26	Handle socket bar	1
27	Handle socket bar washer	2
28	Light spring washers M8	2
29	Cross slot small pan head screw M8×16	2
30	Pull back axis	1
31	Hexagonal nut M10	2
32	Handle Section Components	1
33	Under the handle sectional weldment	1
34	Stopper	1
35	Circlips for shafts M20	2
36	Handle jacket	1
37	Trust plate mat	1



# Pre-Operation Checklist

## IMPORTANT

The jack can be tilted during shipping, and this can allow air to enter the cylinders. As a result, when you first pull a new jack out of the box, it is critical to bleed out the air before using it.

Additionally, it would be best to repeat this practice monthly or whenever you notice any lapses in lifting capacity. Bleeding every month will help your jack perform at its best. To bleed the jack, follow the steps below:

1. With the valve open, pump ten times.
2. Close the valve and elevate it to the full height.
3. Continue to pump ten times while at full extension.
4. Lower the cylinder by releasing the valve.
5. If required, repeat two more times to expel all air from the cylinder.

Most of the time, this will completely bleed the jack. If not, gently unscrew the oil filler plug on the side after the cylinder has been freed and lowered to help remove any trapped air.



# Operation

## **Install the Handle**

1. Connect & install the upper & lower handles with the fastening screws.
2. Loosen the positioning screw on the handle & insert the handle into the snap hole.
3. Tighten the positioning screw and complete the installation of the handle.

## **Jack Lifting Operation**

1. Choose a safe place, park the vehicle on a flat hard horizontal plane & turn off the engine.
2. Turn the handle counterclockwise & lower the jack. After the lift arm is placed in its lowest position, turn the handle clockwise to close the oil return valve.
3. Carefully align the jack pallet with the jack point of the vehicle chassis (refer to the vehicles operator's manual).
4. Pump the handle until the jack tray contacts the support point of the vehicle's chassis (note before jacking, make sure that the jack tray is well seated with the vehicle's jack point, else reposition before lift).
5. Continue to pump the handle in a nice smooth slow jacking action right to the bottom.
6. When the vehicle has been lifted to the required height place matching axle stands in appropriate positions to support the vehicle. (Note the axle stands are required & should always be used in pairs).
7. Slowly turn the handle counterclockwise to lower the jack until the support point of the vehicle lands on the centre of the paired axle stands. Finally turn the handle clockwise to close the oil return valve.
8. Note: because the jack has a safety pressure limiting device, the jack will protect itself by suddenly releasing the pressure therefore never jack up a vehicle with a weight above the pressure limiting tonnage.

## **Lowering the Vehicle**

1. Remove all tools from under the vehicle.
2. Locate the jack under the vehicles jack point. Turn the handle clockwise & pump the handle to lift the vehicle enough to remove the axle stands.
3. Slowly turn the handle counterclockwise (make sure each turn does not exceed half a turn) to lower the vehicle to the ground.
4. Continue to turn the handle counterclockwise until the jack reaches the lowest position.

## **Care Should Be Taken in the use of Jack Supports**

1. The rated weight of the jack support refers to the rated weight of a pair of supports. The supports must not be overloaded.
2. Before use it is necessary to ensure that the support points on the vehicle's chassis locate into the centre of the paired jack supports & the brackets are used on a hard level surface.
3. The support brackets must always maintain identical height when used.
4. The wrong use of the support brackets can lead to property damage & personal injury.



# Maintenance

- Do not use the jack if damaged, to prevent serious accidents & injuries. If abnormal sounds or vibrations are detected during operation, refer to the maintenance & troubleshooting guide below.
- Before each use, carry out an inspection of the jack, check for any deformation, loose or missing parts & rectify before use.
- Oil filling may be required occasionally. Check that the oil level is correct.
- The top of the piston rod, horizontal axis, rollers, casters & other rotating parts require greasing. Make sure they are always well greased.

## Replace the hydraulic oil at least once every 3 years.

1. Loosen the oil hole screw, but do not remove the screw.
2. Insert the handle into the snap hole.
3. Insert the handle counter-clockwise to open the oil return valve.
4. Turn the handle clockwise, press the handle repeatedly up and down in rapid succession several times to exhaust the air in the oil circuit.
5. Tighten the oil filling hole screw.

## COMMON FAULTS & SOLUTIONS

SYMPTOM'S	Jack does not lift rated load	X	X	X	X	
	The pallet drops automatically under load		X			
	The tray never lifts			X	X	
	The handle feels soft & limp					
	Handle bends under load		X			
	Oil leaks from filling hole					X
PROBABLE CAUSE		1. Check oil return valve is completely closed. 2. There may be air in the circuit	1. Oil line may be blocked. 2. The oil return valve is not fully closed.	Low on oil.	Air in oil.	Oil overfilled
SUGGESTION		1 Turn the handle clockwise to ensure valve is closed 2. Discharge air from oil.	1. Replace oil 2. Turn handle clockwise to close oil return valve.	Top up oil.	Replace oil.	Drain oil so that level is 6mm below filling hole.



## **Rocwood Warranty**

### **1. Users Statement of Warranty**

All machines supplied by Rocwood Ltd are warranted to be free from defects in material and workmanship. The Warranty applies to the original purchaser, is not transferable and covers faulty parts and the labour involved in replacing and repairing those parts.

### **2. Period of Warranty**

- (a) 12 month Warranty from the date of sale to the original purchaser for a period of 12 months, unless stated otherwise.
- (b) A 90-day Warranty applies to items subject to normal wear and tear, e.g. but not limited filters, tyres, wheels, belts, spark plugs, blades (for lawnmowers & brushcutters), cutter bars (for hedgecutters), cables, carburettors, and bearings.

### **3. Not covered by this Warranty**

- (a) This Warranty covers 12 months domestic use, business or continuous use will invalidate this Warranty. Unless stated otherwise.
- (b) The Warranty policy does not cover any depreciation or damages caused by ordinary wear, rusting or corrosion, lack of correct maintenance or operation, misuse, abuse, lack of transportation or accident.
- (c) The Warranty policy will not cover failure or damage caused as a result of parts or accessories being modified without the written approval of Rocwood Ltd.
- (d) The Warranty policy is non-transferable and is only applicable to the original purchaser.
- (e) Warranty on high pressure hoses is limited 6 months and does not include high pressure hoses which have suffered external damage.

### **4. Disclaimer**

- (a) No person is authorised to make any warranties, representations or promises, expressed or implied, on behalf of Rocwood Ltd, or to modify the terms conditions or limitation of this Warranty policy in any way.
- (b) All goods must be examined on receipt, please examine all machines and packages, if there is any damage or short shipment sign 'Damaged' or 'Detail any item not received' and notify both Rocwood Ltd Warranty Department by email and the carrier within 7 days of any damage or missing parts. No claims will be accepted after this time.
- (c) Rocwood Ltd will arrange collection of faulty goods within the first 60 days and thereafter it will be a return to base Warranty (the customer must return and we will check, if found faulty the machine will be repaired and returned back to the customer. If found to be faulty and we cannot repair then we will refund or replace).
- (d) The Warranty offered by Rocwood Ltd is limited to the making good by repair or replacement for the purchaser any part or parts found, upon examination at our workshop, to be defective under normal use and service due to defects in material or workmanship. Returned machines must be complete and unexamined.
- (e) This Warranty does not apply to any part of the goods, which has been subjected to misuse, abuse, improper or abnormal use, negligence, alteration, modification & accidental damage.
- (f) Rocwood Ltd shall have no liability or responsibility to the purchaser or any other person or entity with respect to any liability, loss, or damage caused or alleged to be caused directly or indirectly by the goods.
- (g) Economic loss or extra expense due to unit damage/failure is not covered under the Warranty. Under no circumstances is Rocwood Ltd liable for any indirect, incidental, or consequential damages due to unit damage or failure.
- (h) Some units require periodic maintenance, as outlined in the unit's Operation Manual, and it is the responsibility of the customer to perform regular maintenance. Failure to properly maintain the unit and perform regular maintenance may void the Warranty.
- (i) If a customer sends an item for repair and it is determined to be unrepairable, the customer remains responsible for return shipping costs unless otherwise stated. If the item is out of warranty and cannot be repaired, the company may offer disposal options at no additional cost. Customers will be informed of their options before any further charges are incurred. The company is not liable for return shipping fees for items that cannot be repaired unless explicitly agreed upon in advance.
- (j) The customer must notify Rocwood of any alleged defect within seven (7) days of its discovery. Where Rocwood requests the return of goods for examination, the customer shall return such goods within fourteen (14) days of the request, unless otherwise agreed in writing. Failure to return the goods within this period may be deemed a failure to comply with the warranty procedure, and the claim will be re-assessed in line with the warranty terms applicable at the time of resumed contact by the customer.

Where Rocwood requests further information, such as photographs or video evidence, the customer shall provide this within fourteen (14) days, unless otherwise agreed in writing. If communication ceases for a prolonged period, the claim may be treated as paused, and when resumed it will be re-assessed in line with the warranty terms applicable at the time of resumed contact by the customer.

(k) Goods returned outside of the twelve (12) month warranty period shall not be covered under this Warranty. Rocwood reserves the right to reject any such claim unless expressly agreed in writing and subject to compliance with the fourteen (14) day requirement set out in clause (j). In such circumstances, Rocwood may, at its sole discretion, offer the customer options for a paid repair. Any such offer shall be ex gratia, is not guaranteed, and shall not constitute an extension or renewal of the original warranty. Rocwood further reserves the right, dependent upon the nature or condition of the goods, not to offer a repair option. Where a paid repair is offered, all costs, including but not limited to parts, labour, and carriage, shall be borne by the customer and will be confirmed by Rocwood in writing by way of a quotation prior to any work being undertaken.

(l) Where goods are returned to Rocwood for the purpose of inspection, repair or replacement under warranty, the customer shall be notified once the inspection process is complete. If the customer fails to provide instructions, respond to correspondence, or collect the goods within ninety (90) days of such notification, Rocwood shall be entitled to treat the goods as abandoned. In such circumstances, Rocwood reserves the right to dispose of the goods without further notice and shall bear no liability to the customer for any loss arising therefrom.

**This warranty is provided in addition to, and does not affect, your statutory rights.**

### **Returning**

Pack the machines carefully so that any transit damage is avoided. All machines (if applicable) should be drained of petrol and oil and securely plugged to prevent seepage. Certain other components, electrical items for example, may require particular care when packing to avoid damage in transit.